



# Ebb and Flow

For Oboe and Resonant Piano

Composed by  
Austin Engelhardt

2021



# Ebb and Flow

For Oboe and Resonant Piano

Composed by  
**Austin Engelhardt**

Cover Art By  
**Ellen He (何云)**

2021

**Duration: About 8 minutes**



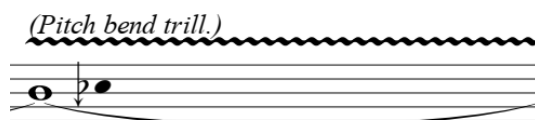
## Performance Notes:

-This piece requires an ebow to be placed on the the B $\flat$  4 string of the piano (as indicated in the score). For best sound the ebow should be placed as close to the center of the string as possible. The ebow will need to be removed during the piece.

-The sustain pedal of the piano will need to be depressed for the entire duration of the piece. This should be achieved either by placing a weight on the pedal or by having someone sit at the piano to hold down the pedal.

-When indicated, the oboe player will need to turn and play directly into the soundboard of the piano to create an echo.

-**Pitch bend trills:** Pitch bend trills indicate that a trill should be performed between the two indicated notes using only bends at the reed.



-**Timbre Trills:** “+” indicates primary fingering, “o” indicates harmonic fingering.



-**Feathered beaming:** Feathered beams are gestural and do not need to conform to the timing of the meter.



-**Micro Tones:**

$\flat$  -  $\frac{3}{4}$  Flat

$\sharp$  -  $\frac{3}{4}$  Sharp

$\flat$  - 1/4 Flat

$\sharp$  - 1/4 Sharp



# Ebb and Flow

Austin Engelhardt

**Delicate** ♩ = 60

\*Try to match the tone of the Ebow drone and emerge from it like you are one sound.

(Pitch bend trill.)

Oboe

Piano

Place Ebow on B<sub>b</sub> string

Sempre Ped.

Ob.

\*fade back into the drone.

*n* *pp* *mp*

Ob.

(Pitch bend trill.)

*p* *mf* *p* *n*

Ob.

*mp* *mf*

Ob.

*pp* *mf*

Ob.

(Pitch bend trill.)

*pp* *mp*

Ob. *mf*

Ob. *subito p* *mf*

Ob. *pp*

Ob. *mf* *pp* *mp* (Pitch bend trill.)

Ob. *pp* *mf*

Ob. *pp* *mf* (Pitch bend trill.) *mf*



Ob. 38

Musical notation for Ob. 38. The staff is in treble clef with a key signature of one flat. It begins with a melodic line featuring slurs and accents. At measure 39, there are two triplet markings. Dynamic markings include *pp*, *mf*, and *f*.

Ob. 41

Musical notation for Ob. 41. The staff is in treble clef with a key signature of one flat. It features a series of triplet markings and a dynamic marking of *mp*.

Ob. 44

Musical notation for Ob. 44. The staff is in treble clef with a key signature of one flat. It features a long slur over a series of notes with plus signs above them. The tempo marking changes from *rit.* to *a tempo*. A dynamic marking of *f* is followed by *subito p* and then *mf*. A wavy line indicates a *(Pitch bend trill)*.

Ob. 47

Musical notation for Ob. 47. The staff is in treble clef with a key signature of one flat. It features a slur over a series of notes with plus signs above them. Dynamic markings include *n* and *mp*. The tempo marking is *rit.*.

Ob. 50

Musical notation for Ob. 50. The staff is in treble clef with a key signature of one flat. It features a slur over a series of notes with plus signs above them. The tempo marking is *a tempo*. Dynamic markings include *f* and *p*.

Ob. 53

Musical notation for Ob. 53. The staff is in treble clef with a key signature of one flat. It features a slur over a series of notes with plus signs above them. Dynamic markings include *fp*.

\*Pitch bend as far down Ebb and Flow as possible, no specific interval.

(Pitch bend trill.)

Ob. *f* *mp*

Remove elbow, begin playing directly into the piano

Ob. *ff*

**Bold** ♩ = 90

Ob. *mf*

Ob. *pp* *mp* *f*

Ob. *p*

Ob. *f* *mf*

Ob. 74

*pp* *p*

Ob. 76

*Similie.*

*cresc.*

Ob. 77

\*Pitch bend as far down as possible, no specific interval.  
(Pitch bend trill.)

*ff* *p*

Ob. 80

*mf*

Ob. 83

*mf*

Ob. 86

**Fast as Possible**

*pp* *f*

89 Ob. *a tempo*  
*subito p* *ff*

91 Ob.  
*subito p* *fff*

**Delicate** ♩ = 60

94 Ob.  
*mp* *p* *f*

98 Ob.  
*mp*

101 Ob.  
*f* *mp*

104 Ob. (Pitch bend trill.)  
*pp* *p*

107 Ob. (Pitch bend trill.)  
*pp* *p* *n*